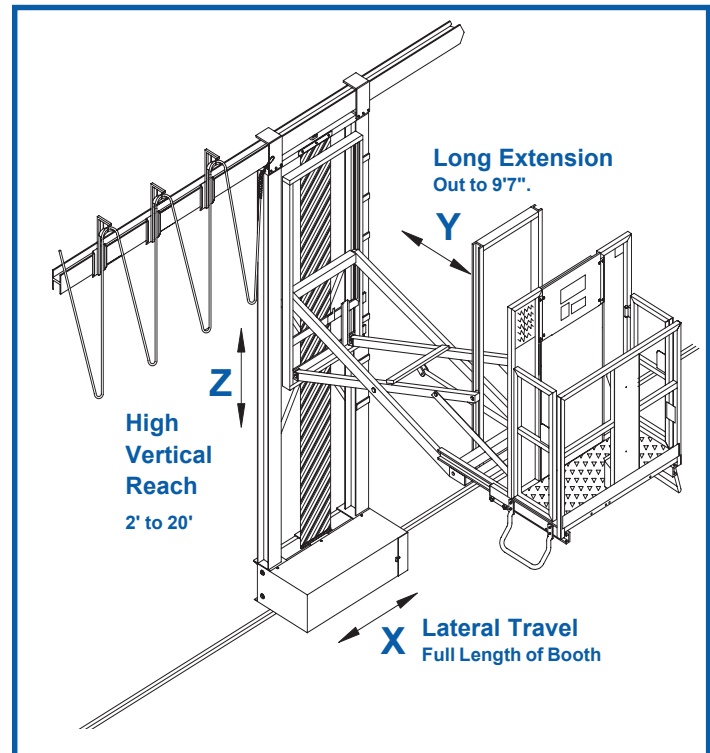


MULTI-AXIS MAST LIFTS

3-AXIS BALLSCREW SYSTEM



- Pneumatic power source makes lift safe for use in heavy paint applications and other hazardous locations. Unit requires 100 PSI at 80 SCFM.
- Operator controls are located in the front of the platform allowing the operator to concentrate on the task at hand.
- Operator platform is 21" deep x 48" wide with a capacity of 500#.
- Unit is designed for high production and low maintenance with self-lube bushings and a minimum amount of grease points.
- Equipped with in-line filter/regulator/lubricator with moisture separator to ensure long life of all pneumatic components.
- Standard uncoiled auxiliary air supply in operator platform for accessories.
- Custom product conversion available upon request.



X-Axis

- Entire lift travels on two aluminum wheels which ride on a floor mounted rail and is also guided by cam followers on a wall mounted I-Beam upper rail.
- Upper rail serves as a support for a roller trolley festoon system.
- Rate of travel is variable up to over 40 FPM and is controlled with a variable flow foot valve for hands-free operation.

Y-Axis

- Operator platform extends and retracts horizontally a distance of approximately 79".
- Horizontal travel is approximately 15 FPM.
- Driven by a sealed linear actuator which can be quickly replaced for ease of maintenance and minimal down time.

Z-Axis

- Lowered platform height is approximately 2'. Raised platform height is available up to 20' depending on desired height and intended installation area.
- Rate of vertical travel is approximately 15 FPM.
- Z-Axis driveline is a positive displacement system using a rotary ballscrew driven through a self-locking worm drive gear reducer for safety and precise control.
- Equipped with two independent safety systems to prevent uncontrolled descent in the unlikely event of an interruption in air supply or mechanical driveline failure.
- Equipped with E-down system to allow the platform to be lowered by the operator if air supply is lost.
- Can be raised and lowered from the ground controls for maintenance or if the operator should become disabled.

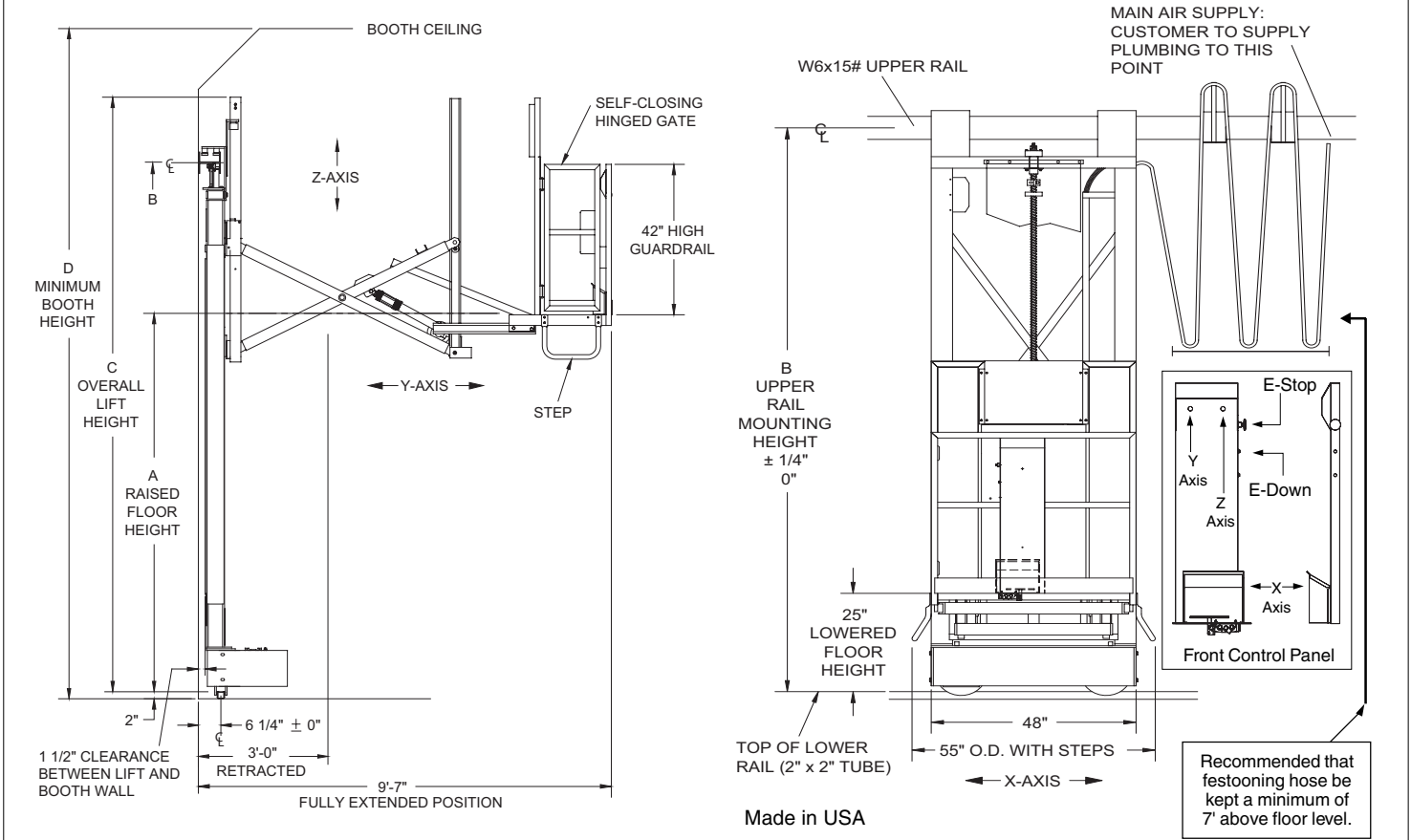
MULTI-AXIS MAST LIFTS

PRODUCT SPECIFICATIONS

SPACE REQUIRED FOR FESTOONING SYSTEM IN STORED POSITION		
Booth Length	Storage Space	Approx. # Carriers
0-50 Ft.	3 Ft.	4
50-80 Ft.	4 Ft.	6
80-120 Ft.	6 Ft.	9

If booth does not have enough length to allow access to ends of product, consult factory for options.

Standard ambient operating temperature range 60° F to 120° F. For non-standard temperature ranges, consult factory for design options.



STANDARD MODEL	A	B	C	D
LP2-810	8'-0"	11'-3"	13'-3"	15'-0"
LP2-910	9'-0"	12'-3"	14'-3"	16'-0"
LP2-1010	10'-0"	13'-3"	15'-3"	17'-0"
LP2-1110	11'-0"	14'-3"	16'-3"	18'-0"
LP2-1210	12'-0"	15'-3"	17'-3"	19'-0"
LP2-1310	13'-0"	16'-3"	18'-3"	20'-0"
LP2-1410	14'-0"	17'-3"	19'-3"	21'-0"
LP2-1510	15'-0"	18'-3"	20'-3"	22'-0"
LP2-1610	16'-0"	19'-3"	21'-3"	23'-0"
LP2-1710	17'-0"	20'-3"	22'-3"	24'-0"
LP2-1810	18'-0"	21'-3"	23'-3"	25'-0"
LP2-1910	19'-0"	22'-3"	24'-3"	26'-0"
LP2-2010	20'-0"	23'-3"	25'-3"	27'-0"

Dimensions are from top of lower rail.

INSTALLATION KIT (1 Required Per Lift)

Part Number: use LP2 [booth length] [booth height] with suffix IK
(i.e. LP26020-1K)

Change prefix LP2 to LP4 for 4th Axis Inside Descent Lift.

Kit includes:

- Upper and lower rails for mounting lift to booth walls with lower rail stops, and all mounting hardware.
- Festooning system with trolleys, main air supply hose and hose support grip. System is capable of carrying 2 additional lines, supplied by customer, up to 3/4" I.D. for breathing air and paint line or auxiliary air line for paint equipment.

OPTIONAL:

OPTION	P/N	OPTION	P/N
Upper Rail Spacer Kits	201-0974	5 Gallon paint pot kit	201-2350
4x4 Overspray cover	201-1024	Lower rail scraper kit	201-2251
Lower rail guides	201-0074	Front gate	Consult Factory
Auxiliary flex track	201-0075-	Receiver Steps	Left Side: 201-2256
Safety contact bumper system	202-0967 Right Side: 201-2255	

SEE PAGE 17 FOR OPTION DESCRIPTION

Note: Model selected should not exceed the inside height of booth.
For calculation take the raised floor height (Dimension A) of the lift plus an additional 7' for personnel.
• All models meet applicable OSHA/ANSI Standards as interpreted by LPI, Inc. •