

AIR/HYDRAULIC SCISSOR LIFTS

RAIL GUIDED SYSTEM



DESIGNED FOR APPLICATIONS WHERE 3-AXIS TRAVEL IS NOT REQUIRED AND EXISTING SPRAY BOOTHS LACK STRUCTURAL INTEGRITY

- Rail guided X-axis travel allows the operator to concentrate on the task at hand rather than steering around obstacles.
- Pneumatic power source makes lift safe for use in paint booths and other hazardous locations. Unit requires 100 PSI at 50 SCFM.
- Controls - Platform controls consist of a self-centering hand valve for vertical travel at a rate of 15 FPM and a self-centering foot control for X-axis travel at a variable rate of up to 40 FPM.
- Economical R.O.I. - Increases worker productivity and safety while decreasing workers' compensation costs due to falls and other injuries.
- Custom product conversions available upon request.

ALL MODELS INCLUDE:

- OSHA-Approved shut off/lockout valve
- Filter regulator lubricator
- Auxiliary air supply in operator platform
- Holding valves to prevent descent of lift if hydraulic system fails
- Emergency stop
- Z-Axis ground level control station
- Lift cylinder protected to prevent overspray buildup
- 12 ft. raised platform height provides safe product access in booths up to 20 ft. high.

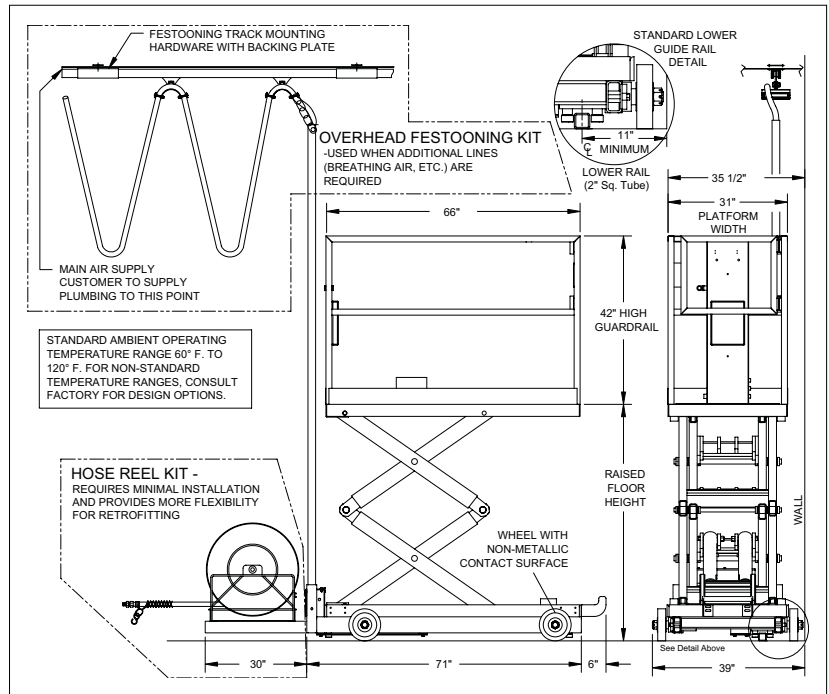
FOR LIFT AIR SUPPLY, ORDER HOSE REEL KIT OR OVERHEAD FESTOONING KIT (BOTH ARE DISPLAYED IN DRAWING)

HOSE REEL KIT (P/N LPST-60-HRK)

An economical method of providing air supply to the unit in applications where breathing air or additional process lines are not required. Lift's main air supply line is carried by a self-retracting hose reel.

Kit Includes:

- Guide Rail for Mounting to Concrete Floor with Hardware and Rail Stops.
- Hose Reel Assembly, Main Air Supply Hose, Hose Support Grip, and Mounting Hardware.



- OR -

OVERHEAD FESTOONING KIT

Ideal for installations requiring multiple process lines into unit. Lift's main air supply is festooned from end of booth with roller trolleys that ride in a track mounted to ceiling of booth.

Kit Includes:

- Guide Rail for Mounting to Concrete Floor with Hardware and Rail Stops.
- Overhead Festooning System with Trolleys, Main Air Supply Hose, Hose Support Grip, and Mounting Hardware. System capable of carrying 2 additional lines, supplied by customer, up to 3/4" I.D. for breathing air and paint line or auxiliary air line for paint equipment.

SPACE REQUIRED FOR FESTOONING SYSTEM IN STORED POSITION

PART NUMBER	BOOTH LENGTH	STORAGE SPACE	APPROX. # CARRIERS
LPST-60-IK	0-60 Ft.	2'	3
LPST-90-IK	60-90 Ft.	3'6"	5
LPST-120-IK	90-120 Ft.	5'	7

Storage space based on 16' high booth. Higher booths would require fewer carriers, making storage space less. Consult factory for options if booth length is a concern.

MODEL NUMBER	MAXIMUM WORKING HEIGHT	MAXIMUM PLATFORM HEIGHT	LOWERED FLOOR HEIGHT	OVERALL LOWERED HEIGHT	OVERALL WIDTH	PLATFORM LENGTH	PLATFORM WIDTH	PLATFORM CAPACITY	SHIPPING WEIGHT
LPST-48	125"	53"	14 1/2"	56 1/2"	39"	66"	31"	500 Lbs.	1200 Lbs.
LPST-96	168"	96"	22"	64"	39"	66"	31"	500 Lbs.	1400 Lbs.
LPST-144	216"	144"	24"	66"	39"	66"	31"	500 Lbs.	1700 Lbs.

Note: Model selected should not exceed the inside height of the booth. For calculation take the raised floor height of the lift plus an additional 7" for personnel.

SLAB TYPE MACHINE SHOULD ONLY BE RAISED ON A HARD FLAT LEVEL SURFACE.

• All models meet applicable OSHA/ANSI Standards as interpreted by LPI, Inc. •

LPI® is a registered trademark of LPI, Inc. 2004