

# Scissor Lifts

Work Tables/Platforms, Scissor Lifts,  
Rail Guided Scissor Lifts, Curved Rail Guided Lifts



- Pneumatic Elevating Work Tables
- Pneumatic Elevating Work Platforms
- Pneumatic Elevating Personnel Work Platforms
- Stationary or Manually Positioned Scissor Lifts
- Rail Guided Lift Systems
- Curved Rail Lift Systems

**LPI**<sup>®</sup>  
LIFT SYSTEMS

800 Wisconsin Street  
Mailbox 10  
Eau Claire, WI 54703  
Toll Free: (800) 657-6956  
Fax: (715) 839-8647  
Web: [www.lpi-inc.com](http://www.lpi-inc.com)  
E-Mail: [sales@lpi-inc.com](mailto:sales@lpi-inc.com)

# ELEVATING WORK TABLES AND PLATFORMS

## Compact Air/Hydraulic Lift Solutions

**LPI Inc. has introduced a NEW work platform/worktable for light or medium duty applications.**

The EWP-4 personnel lift is ideal for areas with limited space. This compact, economical, air operated scissor lift provides a safer alternative to ladders or scaffold and is an ideal solution for paint booths as narrow as 14 ft. or other hazardous environments. The unit features a space saving lightweight design, including a 20" wide deck, with a non-slip floor surface. The platform has a lowered height of 10" and a maximum raised height of 46", providing a working height of approximately 10 ft.

The unit is also available as a worktable, EWT-4, providing a 20" X 66" work surface and up to 1000 lb. load capacity. Both the work platform and worktable are equipped with air controls for safer and easy operation.



**EWP-4**  
Shown with  
Caster Kit

### INCREASED SAFETY

- Reduces fatigue and minimizes excessive movement associated with manual lifting.

### AFFORDABLE

- Operates off compressed air source (not included), requires 8 SCFM at 100 psi.

### OPTIONS AVAILABLE

- 203-0903: Caster Kit
- 203-0904: Bolt Down Kit
- 203-0905: T-Bar Transport Kit
- 203-0906: Access Ramp Kit
- 960-0097-06000: Non-Slip Surface: EWT-4 (Standard on EWP-4)
- 222-5759: Bumpers

### APPLICATIONS

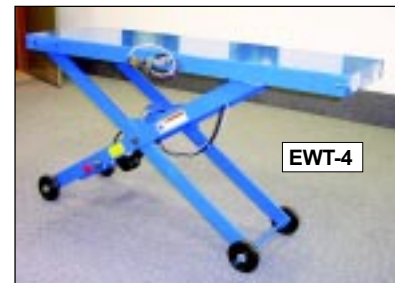
- Maintenance
- Material Handling
- Manufacturing
- Paint Booth

### LIFT TRAVEL SPEED

Up: 5 F.P.M.  
Down: 15 F.P.M.

### SPECIAL OPTIONS

- Call for details on:
- Rail guided systems



**EWT-4**

### CASTER KIT AND T-BAR TRANSPORT OPTIONS



203-0903: Caster Kit



203-0905: T-Bar  
Transport Kit

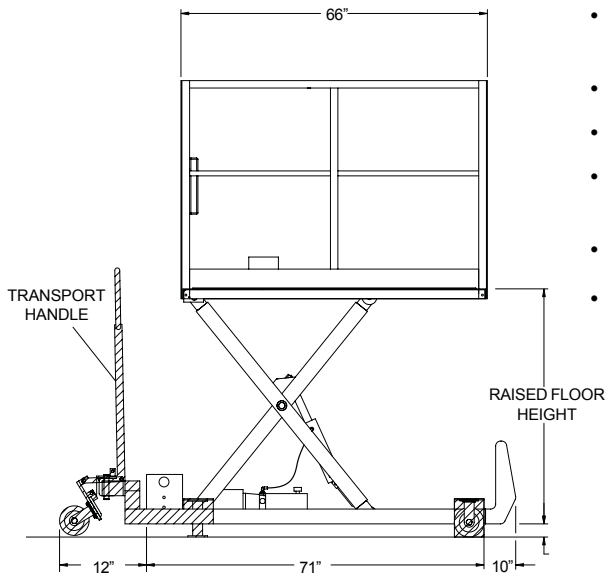
View our website - [www.lpi-inc.com](http://www.lpi-inc.com) for more information on the Elevating Work Table or any of our other products. Our engineers will work closely with you to develop a system designed specifically to your application.

MODEL #	MAX. WORKING HEIGHT	RAISED FLOOR HEIGHT	LOWERED FLOOR HEIGHT	PLAT-FORM LENGTH	PLAT-FORM WIDTH	PLAT-FORM CAPACITY	OVERALL LENGTH	OVERALL WIDTH	SHIPPING WEIGHT
EWT-4	10'	46"	10"	66"	20"	1000#	66"	20"	330
EWP-4	10'	46"	10"	66"	20"	500#	66"	25"	380

All work platforms, unless indicated otherwise, are slab type machines and should only be raised on hard, flat, level surfaces.

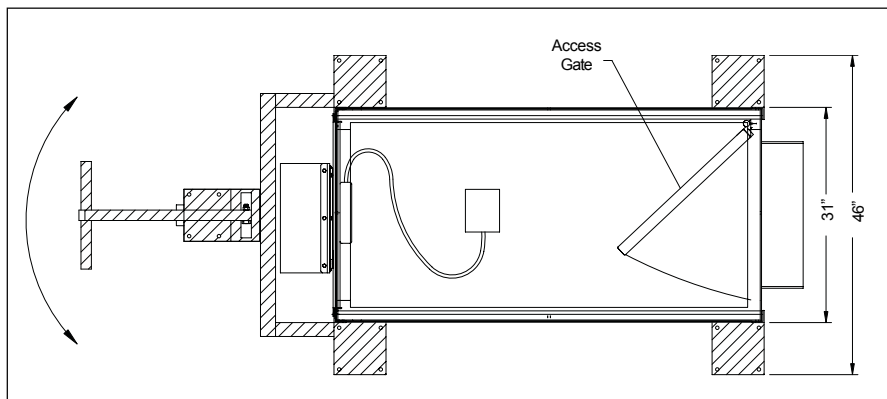


# STATIONARY OR MANUALLY POSITIONED SCISSOR LIFTS



- Pneumatic/hydraulic power. Safe for use in paint booths and other hazardous locations.
- AC or DC power options.
- Minimal installation - quick and easy connection to air source, 1/2" NPT.
- Available in manually positioned roll-around (Model LPSMT) or stationary version (Model LPSM).
- Approx. 15 F.P.M. lift speed.
- Custom product conversion available upon request.

Model LPSMT shown includes Transport Handle Kit.



**OPERATOR PLATFORM CAPACITY 500 LB.**

*Note: Model selected should not exceed the inside height of the booth. For calculation take the raised floor height of the lift plus an additional 7 ft. for personnel.*

Model #	Max. Working Height	Raised Floor Height	Lowered Floor Height	Platform Length	Platform Width	Overall Length	Overall Width	Shipping Weight
LPSM-48*	121"	49"	10½"	66"	31"	74"	31"	750
LPSM-96*	164"	92"	16"	66"	31"	74"	31"	950
LPSM-144*	212"	140"	18"	66"	31"	74"	31"	1250
LPSMT-48	124"	52"	13½"	66"	31"	86"	46"	800
LPSMT-96	167"	95"	19"	66"	31"	86"	46"	1000
LPSMT-144	215"	143"	21"	66"	31"	86"	46"	1300

\*Unit must be bolted to floor.

## OPTIONAL

### Accordian Bellows

Model #	Part #
LPSM-48 .....	222-5091-48
LPSM-96 .....	222-5091-96
LPSM-144 .....	222-5091-144

(not available on LPSMT models).

Foot Control for vertical travel ..... 203-0259

### LPSMT Models Include:

An easy to use Transport Handle Kit (components shaded) for mobility and positioning between work areas. Transport Handle Kit includes: 6" rigid casters and a pull-down handle with retractable steering wheel for maneuverability. Also includes a safety switch to prevent the operator platform from being raised with transport handle in 'transport' position.

**SLAB TYPE MACHINE SHOULD ONLY BE RAISED ON A HARD FLAT LEVEL SURFACE.**

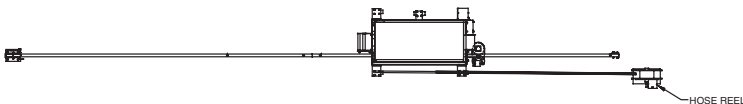
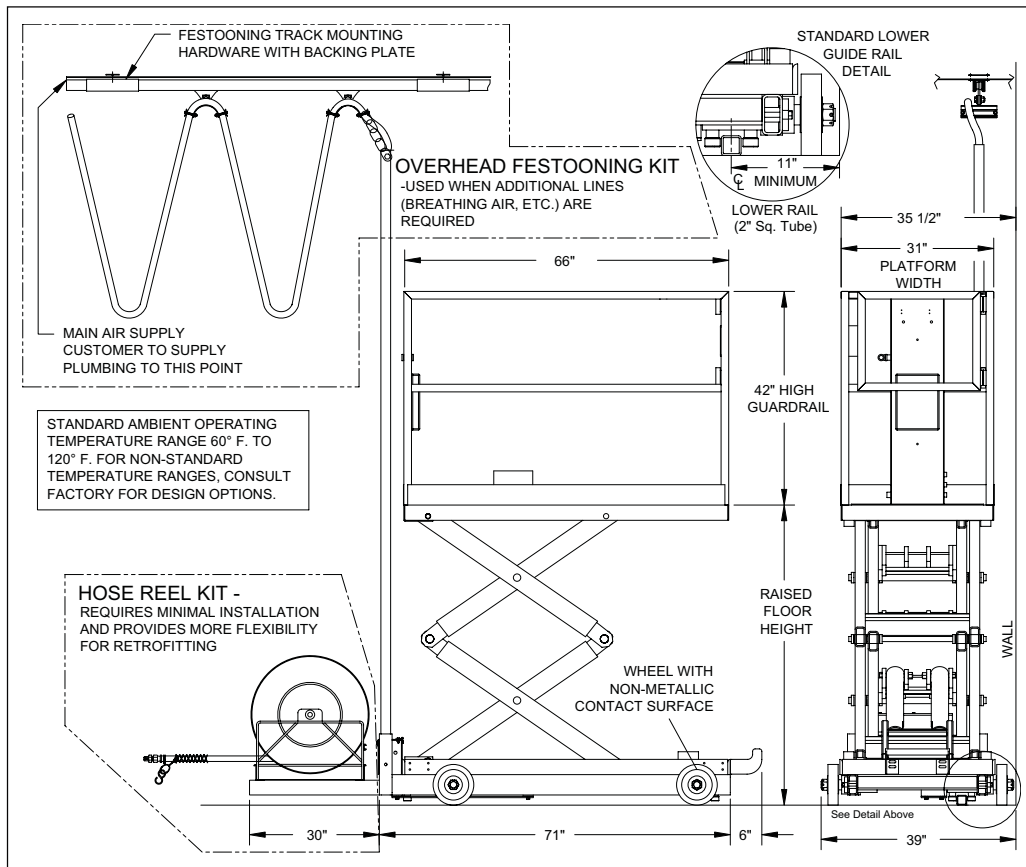
• All models meet applicable OSHA/ANSI Standards as interpreted by LPI, Inc. •



# RAIL GUIDED LIFT SYSTEMS

## DESIGNED FOR APPLICATIONS WHERE 3-AXIS TRAVEL IS NOT REQUIRED

- Rail guided travel allows the operator to concentrate on the task at hand.
- Pneumatic power source - safe for use in paint booths and other hazardous locations.
- AC or DC power options.
- Platform controls consist of a self-centering hand valve for vertical travel, foot valve for lateral travel, and an E-Stop valve for safety.
- Speed - vertical travel approx. 15 FPM, and lateral travel variable up to 40 FPM.
- Custom product conversion available upon request.



View our website - [www.lpi-inc.com](http://www.lpi-inc.com) for more information on Rail guided lift systems or any of our other products. Our engineers will work closely with you to develop a system designed specifically to your application.



# RAIL GUIDED LIFT SYSTEMS CONTINUED



SPACE REQUIRED FOR FESTOONING SYSTEM IN STORED POSITION

Part number	Booth Length	Storage Space	Approx. # Carriers
LPST-60-IK	0-60 Ft.	2'	3
LPST-90-IK	60-90 Ft.	3'6"	5
LPST-120-IK	90-120 Ft.	5'	7

*Storage space based on 16' high booth. Higher booths would require fewer carriers, making less storage space. Consult factory for options.*

## OPTION 1:

### HOSE REEL KIT LPST (specify hose length) -HRK

An economical method of providing air supply to the unit in applications where breathing air or additional process lines are not required. Lift's main air supply line is carried by a self-retracting hose reel.

#### Kit Includes:

- Guide rail for mounting to concrete floor with hardware and rail stops.
- Hose reel assembly, main air supply hose, hose support grip, and mounting hardware.
- Specify booth length at time of order. Hose length available in 10' increments (10' to 100').

## OPTION 2:

### OVERHEAD FESTOONING KIT LPST (specify booth length) -IK

Ideal for installations requiring multiple process lines into unit. Lift's main air supply is festooned from end of booth with roller trolleys that ride in a track mounted to ceiling of booth.

#### Kit Includes:

- Guide rail for mounting to concrete floor with hardware and rail stops.
- Overhead festooning system with trolleys, main air supply hose, hose support grip, and mounting hardware. System capable of carrying 2 additional lines, supplied by customer, up to 3/4" I.D. for breathing air and paint line or auxiliary air line for paint equipment.

Model #	Max. Working Height	Max. Platform Height	Lowered Floor Height	Overall Lowered Height	Overall Width	Platform Length	Platform Width	Platform Capacity	Shipping Weight
LPST-48	125"	53"	14 - 1/2"	56 - 1/2"	39"	66"	31"	500 Lbs.	1200 Lbs.
LPST-96	168"	96"	22"	64"	39"	66"	31"	500 Lbs.	1400 Lbs.
LPST-144	216"	144"	24"	66"	39"	66"	31"	500 Lbs.	1700 Lbs.

## ALL MODELS INCLUDE:

- OSHA-Approved shut off/lockout valve
- Filter regulator lubricator
- Auxiliary air supply in operator platform
- Holding valves to prevent descent of lift if hydraulic system fails
- Emergency stop
- Z-Axis ground level control station
- Lift cylinder protected to prevent overspray buildup
- 12 ft. raised platform height provides safe product access in booths up to 20 ft. high.



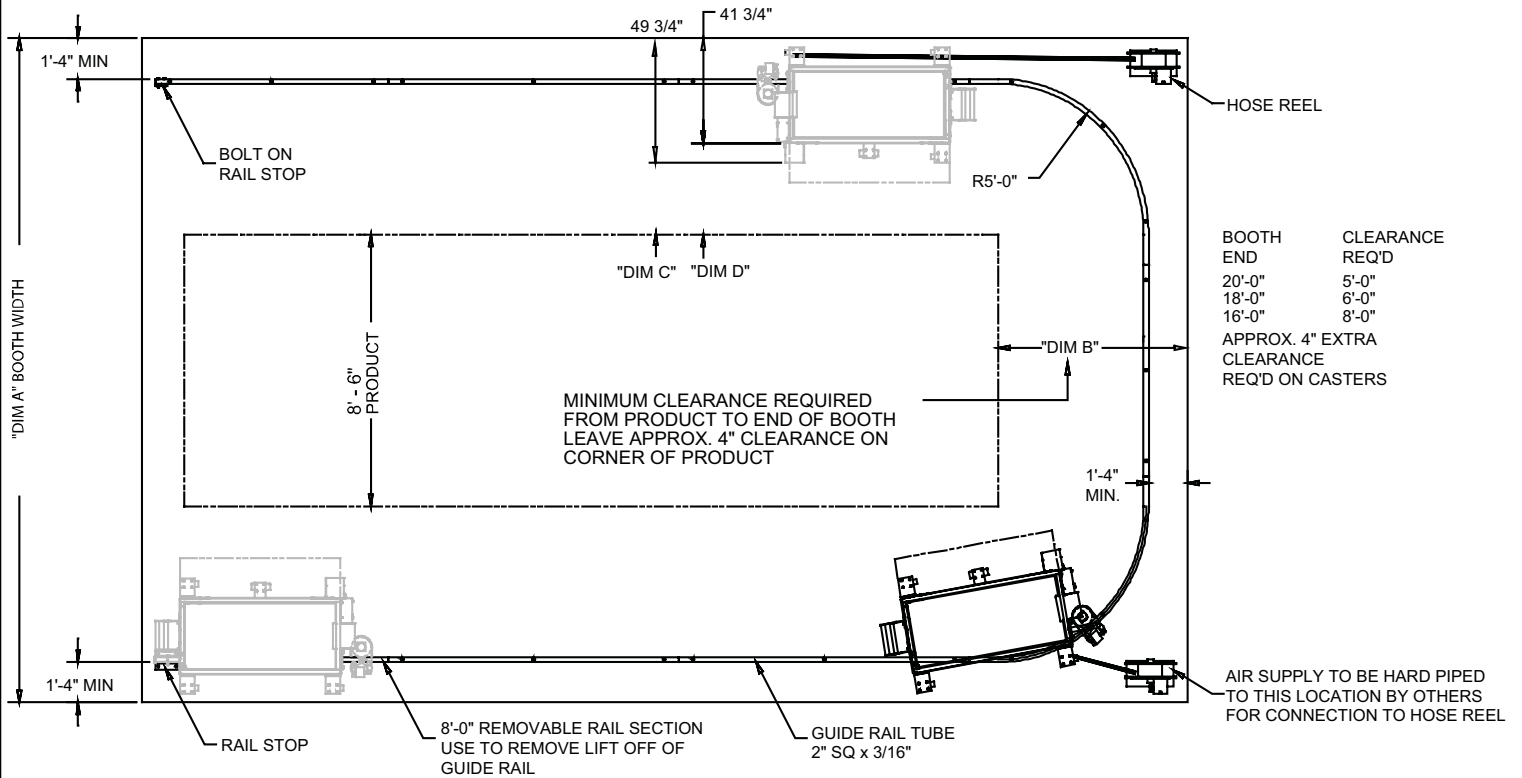
View our website - [www.lpi-inc.com](http://www.lpi-inc.com)  
Our engineers will work closely with you to develop a system designed specifically to your application.



**Note:** Model selected should not exceed the inside height of the booth. For calculation take the raised floor height of the lift plus an additional 7' for personnel.

# CURVED RAIL LIFT SYSTEMS

- Foot operated power activation for smooth, precise control.
- New curved guide rail - one unit services both sides and one end of product.
- Pneumatic power source - safe for use in paint booths and other hazardous locations, such as: paint booths or chemical applications.
- AC or DC power options.
- 16 inch side shifting operator platform allows operator to adjust position for varying size products.
- Approx. 15 FPM lift speed. Approx. 40 FPM travel speed.
- Custom product conversion available upon request.



BOOTH WIDTH	BOOTH END CLEARANCE	PRODUCT CLEARANCE	PRODUCT CLEARANCE
"DIM A"	"DIM B"	"DIM C"	"DIM D"
16 FT	8 FT	INTERFERENCE	3 1/4"
18 FT	6 FT	7 1/4"	1' - 3 1/4"
20 FT	5 FT	1' - 7 1/4"	2' - 3 1/4"

Lift travels entire length of curved rail.

## GUIDE RAIL INSTALLATION KIT (LPSR-60-1K) FOR CURVED RAIL LIFT SYSTEM INCLUDES:

Guide rail, railstops, 2 hose reels with air line and quick disconnects. Rail accommodates booth up to 22 ft. wide by 60 ft. long. Note: Rail must be cut to length in the field and welded and grounded for proper operation. *Consult factory for wider or longer applications.*

Model Number	Maximum Working Height	Maximum Platform Height	Lowered Floor Height	Overall Lowered Height	Overall Width	Platform Length	Platform Width	Platform Capacity	Shipping Weight
LPSR144R	224"	152"	31"	73"	46"	66"	31"	500 Lbs.	1900 Lbs.

### Challenge us with your application!

LPI® Lift Systems has been a recognized industry leader in manufacturing scissor lifts for over 20 years. The company provides manufacturing expertise and engineering support, specializing in: work platforms, fall protection, and personnel lifting equipment for industrial applications and facilities maintenance for customers in a variety of industries and custom applications.



800 Wisconsin Street  
Mailbox 10  
Eau Claire, WI 54703  
(800) 657-6956  
Fax: (715) 839-8647  
Web: [www.lpi-inc.com](http://www.lpi-inc.com)  
E-Mail: [sales@lpi-inc.com](mailto:sales@lpi-inc.com)